

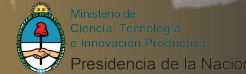


NSF's National Optical-Infrared
Astronomy Research Laboratory



GNAO Science Cases

Morten Andersen, Julia Scharwächter, Gaetano Sivo
With the GNAO science team





Why GNAO?

- GN ALTAIR system aging
- GeMS has shown the science capable with MCAO
- MK excellent site for an MCAO system



GeMS lessons learned

- GeMS+GSAOI provide exquisite image quality
- Instrumental for e.g. crowded fields
- Astrometric stability crucial for proper motion studies
- Relatively large field of view great asset.

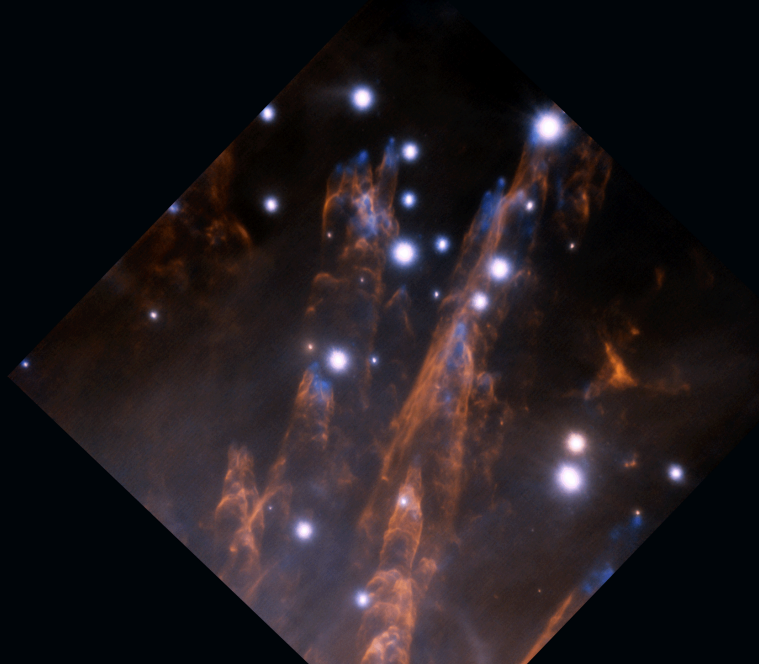


NSF's National Optical-Infrared
Astronomy Research Laboratory

Explosive outflows



Altair Image



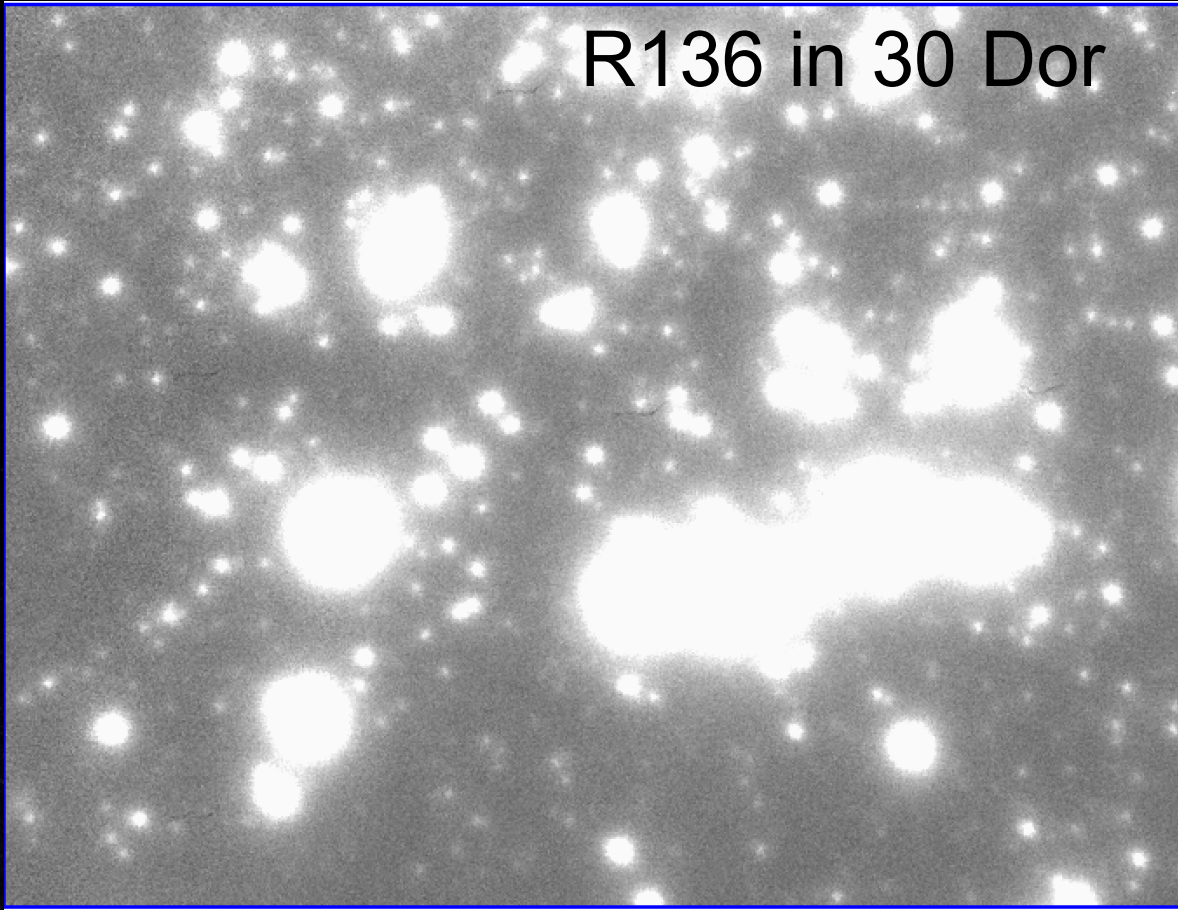
Bally et al. 2015

NIRI Field of view 20"
Multi-epoch data shows material
moving



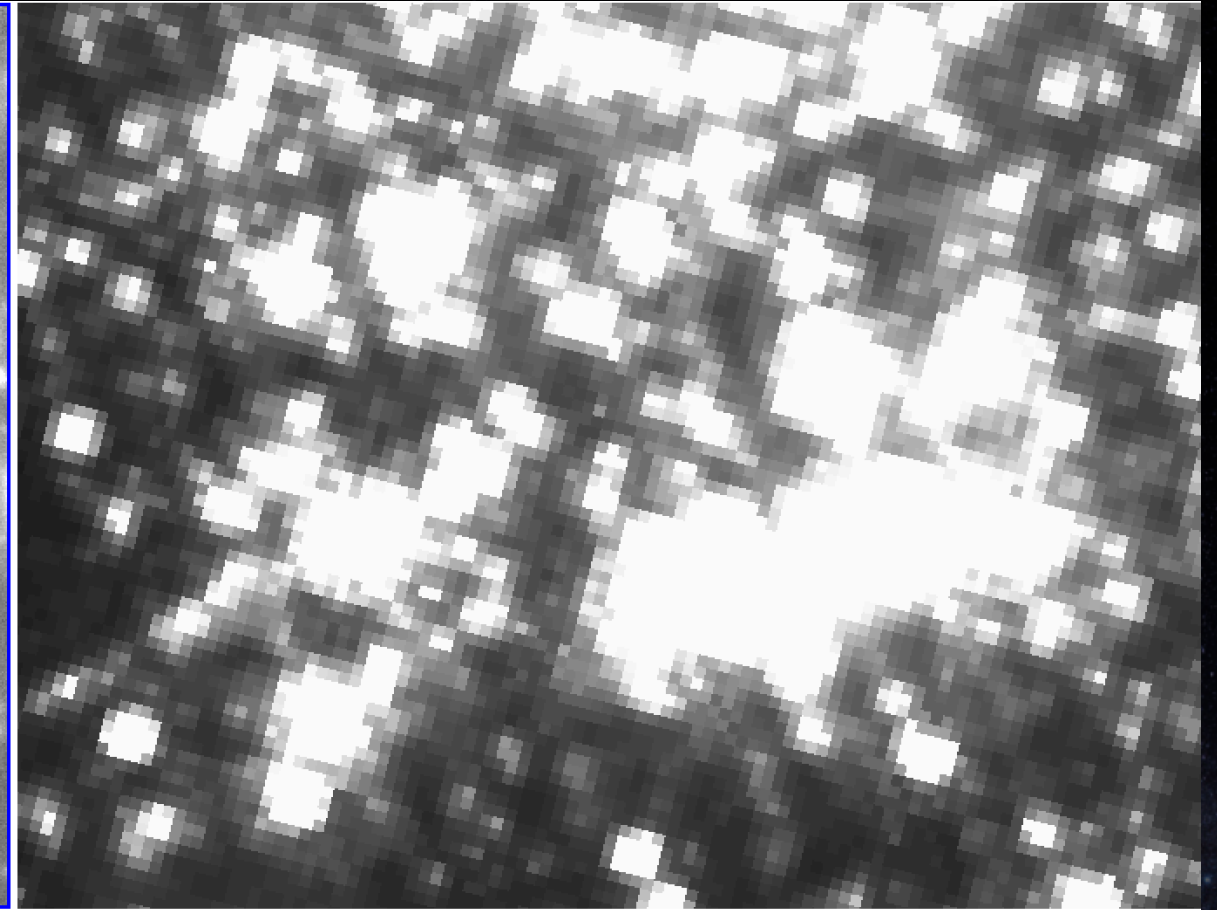
NSF's National Optical-Infrared Astronomy Research Laboratory

High Spatial resolution



R136 in 30 Dor

GeMS/GSAOI K band 15"x10"

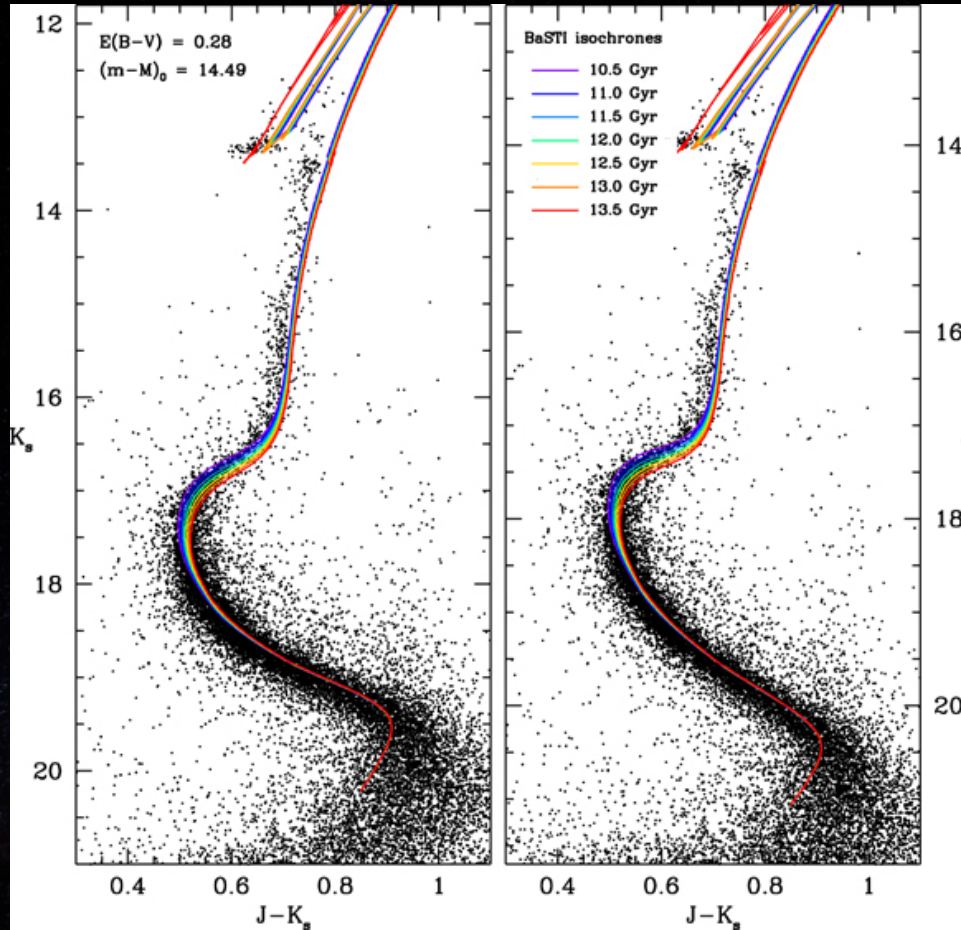


HST NICMOS2 F160W (Andersen et al. 2009),

Lawrence, Andersen et al. in prep



Accurate CMDs



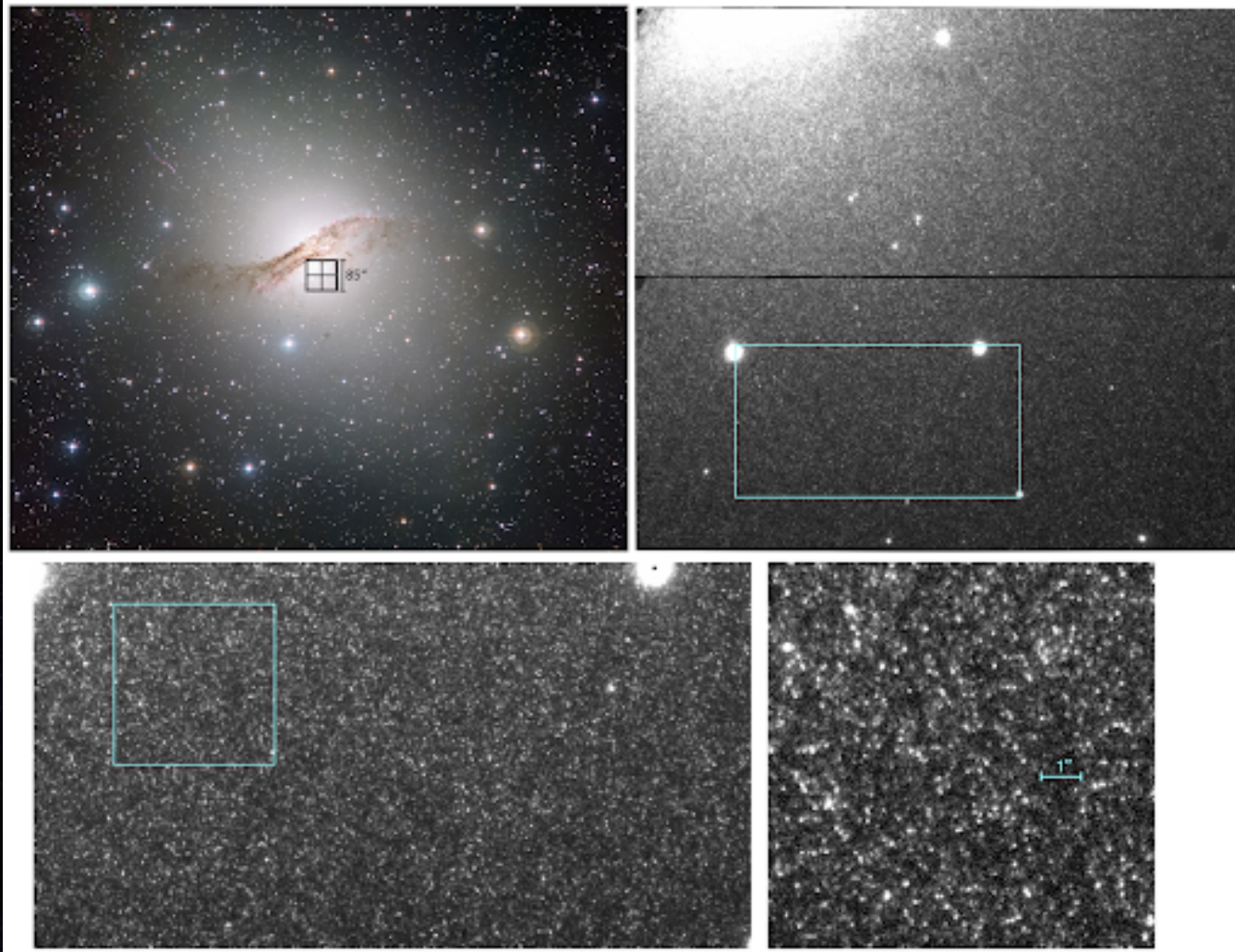
J,K CMD of NGC 6624 with
GeMS/GSAOI

Deep accurate photometry
allows age determination
12 \pm 0.5 Gyr

Saracino et al. 2016



Faint variable studies

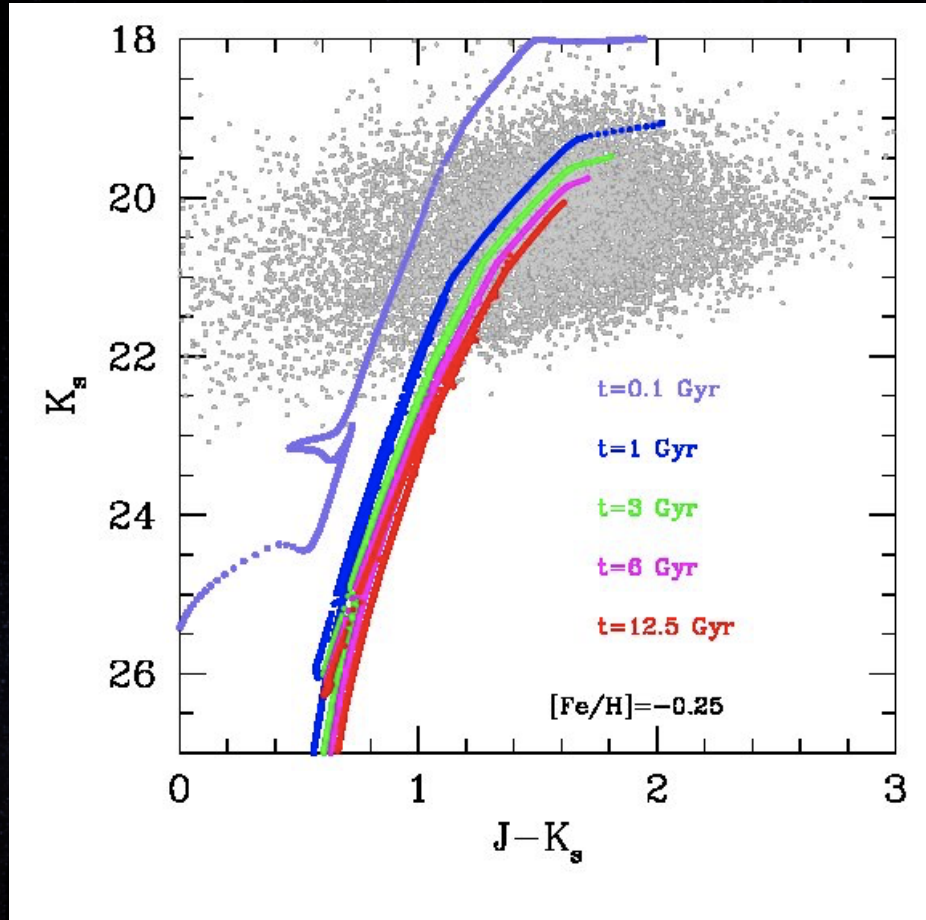


GeMS/GSAOI imaging of CenA. Multi-epoch data will identify variable stars (LPVs)

Blakeslee et al. in prep



Faint variable studies



GeMS/GSAOI imaging of CenA. Color-magnitude diagram

Blakeslee et al. in prep



NSF's National Optical-Infrared
Astronomy Research Laboratory

The Science team:



- Combination of Base of Gemini staff and external expertise for key areas
- Not exhaustive collection of science cases
- To explore which parameters are critical



NSF's National Optical-Infrared
Astronomy Research Laboratory

Science team Members



M. Andersen (Gemini) , J. Bally (Colorado)
J. Blakeslee (Gemini), R. Carasco (Gemini)
R. Diaz (Gemini), T. Dupuy (Gemini)
W. Fraser, A. Feldmeier-Krause (Chicago)
M. J. Jee (Yongsei), H. Kim(Gemini)
M. Lemoine-Busserolle (Gemini), F. Marchis (SeTI)
C. Packham (San Antonio), M. Pierce (Wyoming)
T. Puzia (Univ. Catholica), J. Scharwächter (Gemini)
S. Sivanandam (Toronto), G. Sivo (Gemini)
P. Turri (NRC, HAA), C. Trujillo (N. Arizona)



NSF's National Optical-Infrared
Astronomy Research Laboratory

Science cases:



Driving science cases expected to define the design
Return timely science made capable by an MCAO system

Enabling science cases expected to take advantage of an
MCAO system

The driving science cases are discussed in this talk
Separate talks by Michael Pierce and Jessica Lu



NSF's National Optical-Infrared
Astronomy Research Laboratory

Extragalactic Science cases :



- Central parsecs around AGNs
- AO assisted survey of $0.7 < z < 2.7$ field galaxies
- Gravitationally lensed transients
- Nuclear star clusters in local and nearby galaxies



NSF's National Optical-Infrared
Astronomy Research Laboratory

Central parsecs around AGNs



- The interplay between SMBHs and their immediate environment
- How is Star Formation enhanced/quenched?
- Spatial resolution of $< \sim 0.1''$ allows to resolve $\sim 100\text{pc}$ scale
- Near-IR to compensate for extinction
- Emission lines to trace inflow/outflow and velocity flow.
- $R \sim 5000$ to resolve emission lines and obtain $v \sim 100\text{km/s}$



NSF's National Optical-Infrared
Astronomy Research Laboratory

Survey of $0.7 < z < 2.7$ field Galaxies



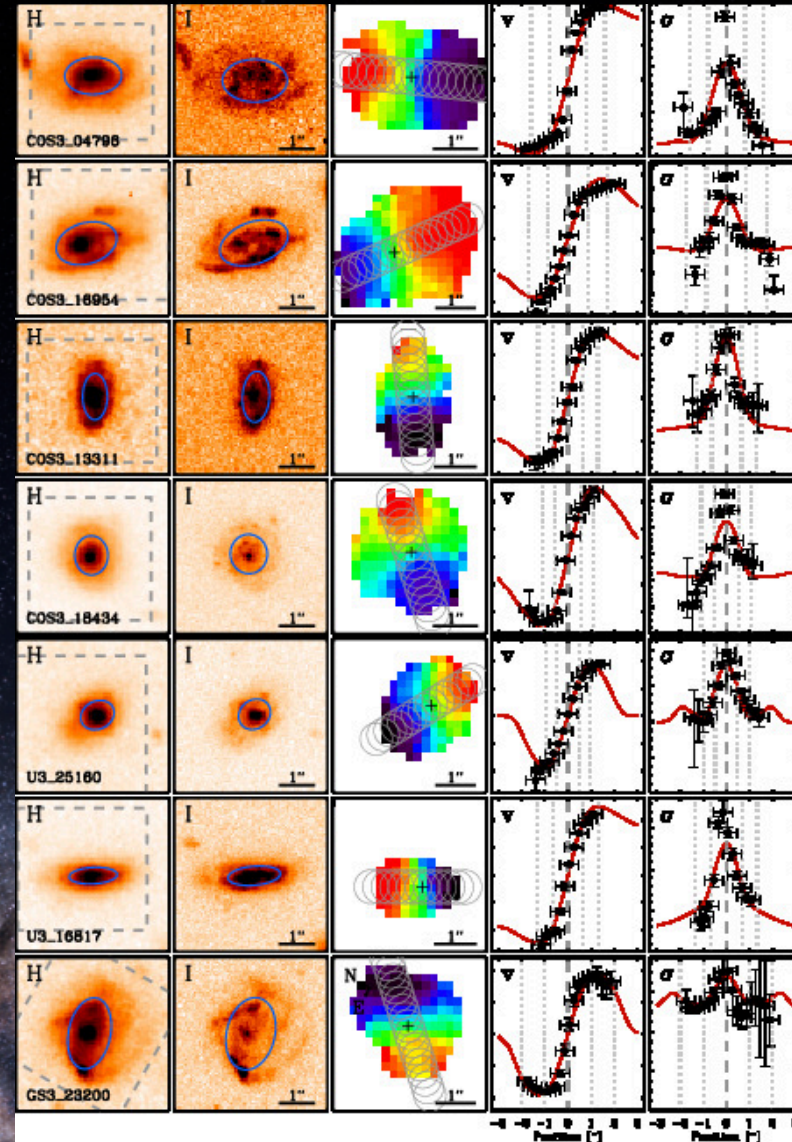
- Period of peak of cosmic Star Formation
- Crucial to understand the SF enhancement and quenching
- Major and minor mergers play large role
- Emission lines and velocity structure crucial



NSF's National Optical-Infrared
Astronomy Research Laboratory



Natural seeing KMOS IFU obs.
of a sample of $z \sim 2$ field
galaxies
Although spatial gradients can
be measured with this
resolution there is no
information about mergers.



Wuyts et al. 2016



NSF's National Optical-Infrared
Astronomy Research Laboratory

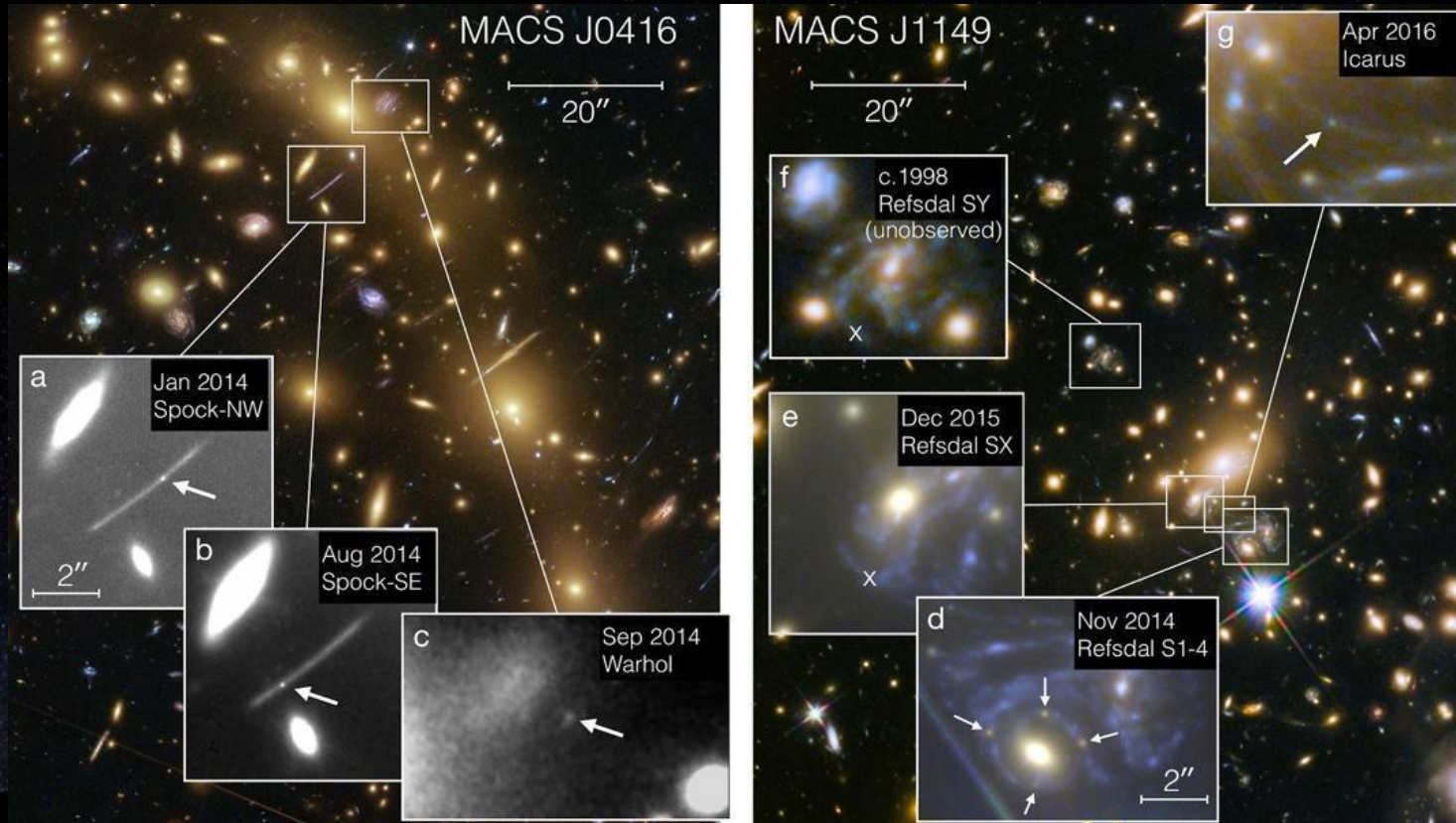
Gravitational lensed transients



- Deep HST surveys found new transient phenomena,
- Cluster dark matter studies,
- Massive star studies,
- Expansion rate of the universe
- Regular temporal sampling is crucial for these studies



Gravitational lensed transients



Lensing and temporal sources in two clusters

Kelly et al. 2018



NSF's National Optical-Infrared
Astronomy Research Laboratory

Nuclear star clusters in nearby galaxies



- Nuclear Star clusters common in Galaxies
- What is their origin?
- Often deeply embedded => high spatial resolution near-IR



NSF's National Optical-Infrared
Astronomy Research Laboratory

Galactic Science cases:



- Galactic Young Massive Star Clusters
- The Galactic Nucleus
- Chemodynamics of Galactic Globular Clusters



NSF's National Optical-Infrared
Astronomy Research Laboratory

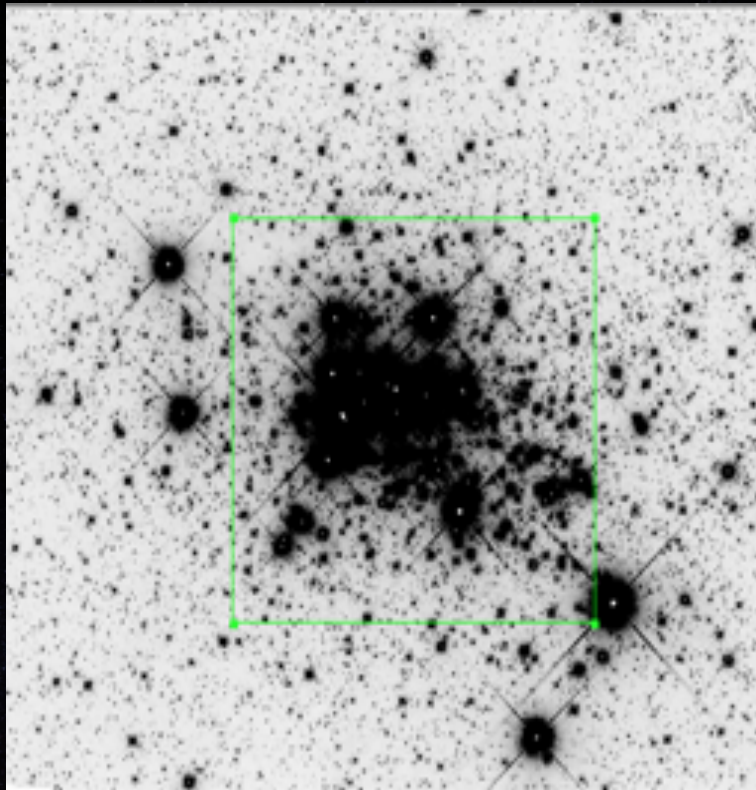
Galactic Young Massive Star Clusters



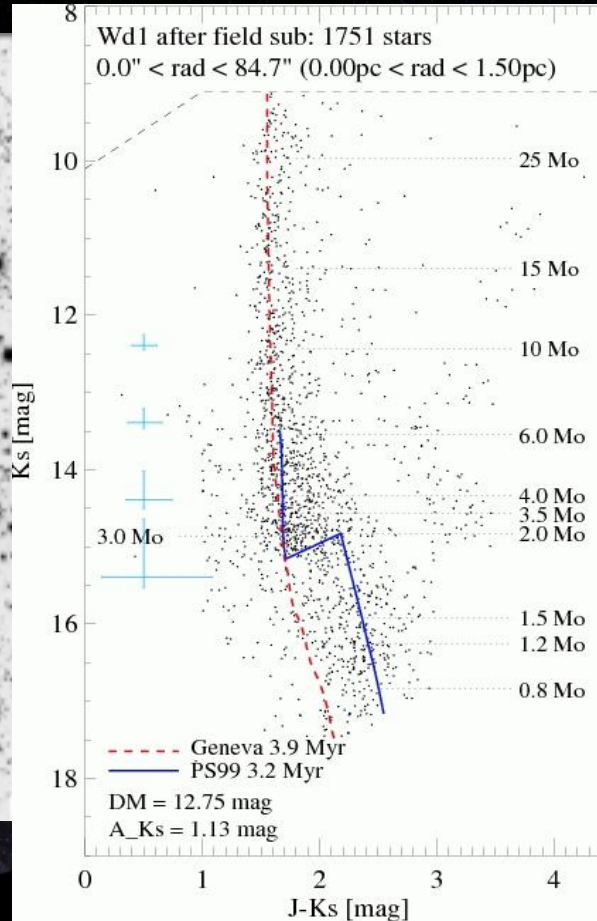
- Rare local analogues to distant star bursts.
- Key regions to search for variations in the IMF
- The formation of the clusters poorly known
- Can they remain bound or disperse into the field?
- More details in the talk by J. Lu.



Galactic Young Massive Star Clusters



Andersen et al. 2017



F160W image of Westerlund 1 and a ground-based color-magnitude diagram. The HST observations reaches down to 0.25 Msun whereas the ground-based color-magnitude diagram only reaches 2 Msun (50% completeness). GNAO can reach the brown dwarf limit (0.08Msun)

Brandner et al. 2008



NSF's National Optical-Infrared
Astronomy Research Laboratory

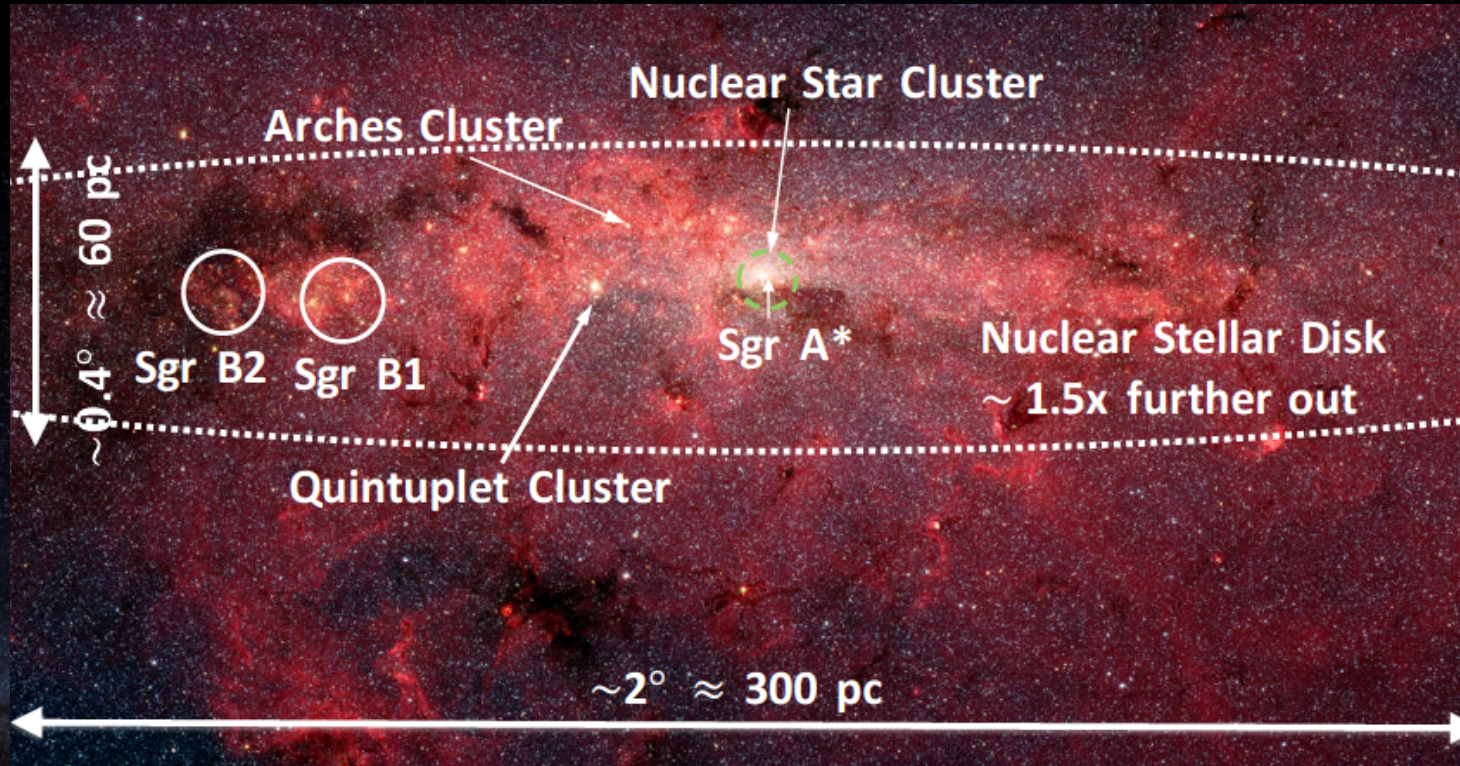
Galactic Center:



- Unique target, only central region to be studied in
- Star formation in an extreme environment
- How was the Galactic Center formed?



Galactic Center:



Schematic of the Galactic Center region. Most notable clusters and objects are marked.



NSF's National Optical-Infrared
Astronomy Research Laboratory

Chemodynamics of Globular Clusters:



- How did Globular clusters form? Do they contain a black hole?
- AO assisted NIR IFU observations:
- Determine the velocity dispersion
- Determine the chemical abundance of each star
- Thus probe for any IMBH in the center of the GC and
- Correlate velocity dispersion with the chemical abundances

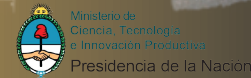


NSF's National Optical-Infrared
Astronomy Research Laboratory

Solar system and brown dwarfs



- Giant Planet Atmospheres and their disks
- Lowest-mass products of star formation





NSF's National Optical-Infrared
Astronomy Research Laboratory

Giant Planet Atmospheres and their disks

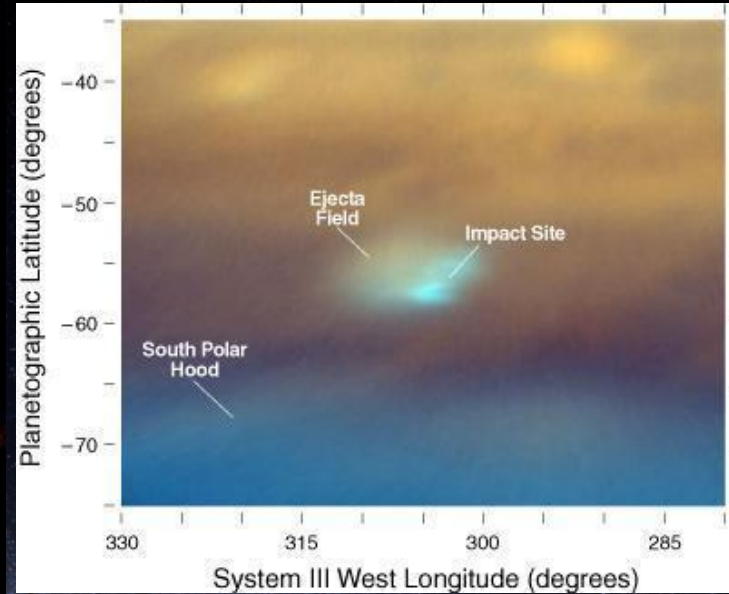
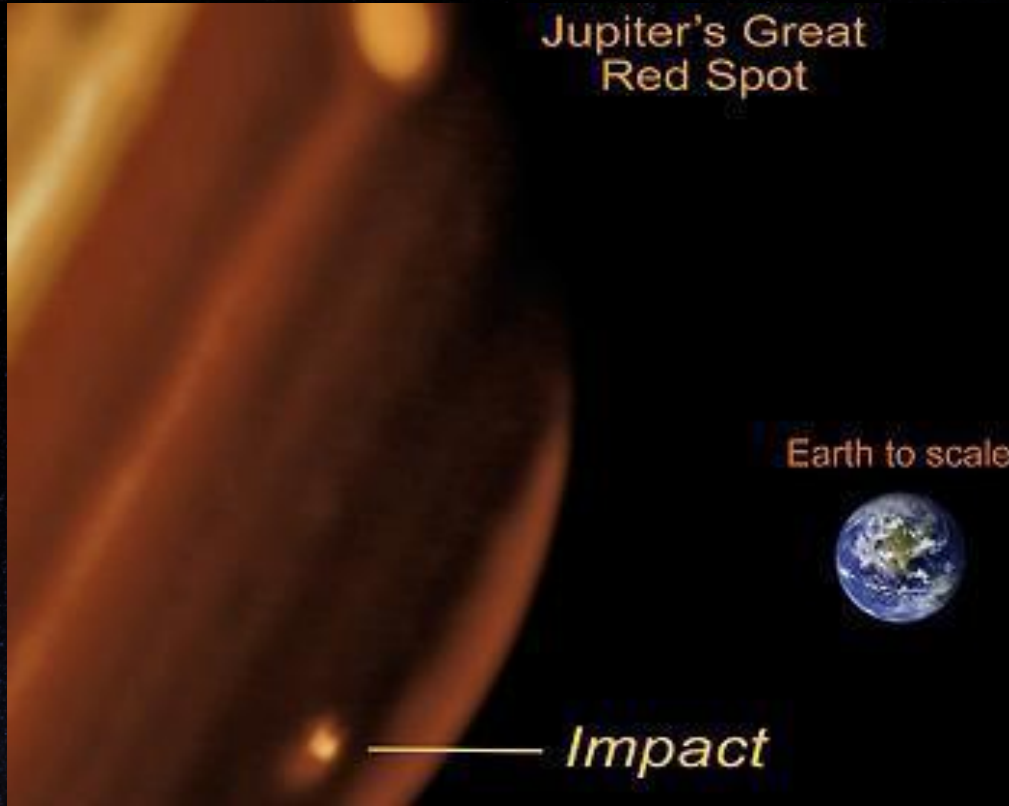


- Wind and turbulence phenomena on giants common.
- Opportunity to look into the atmosphere
- Ice giants analogues to many extra solar planets



NSF's National Optical-Infrared Astronomy Research Laboratory

Gaseous planets:



The scar. Image taken with Keck II.
Right: JHK image of the impact site in Jupiter's southern hemisphere.



NSF's National Optical-Infrared
Astronomy Research Laboratory

Gaseous planets

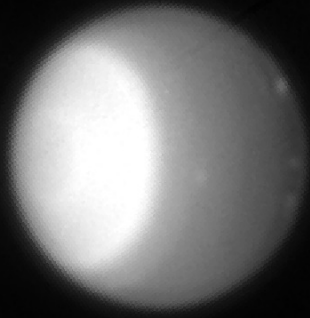


- Due to their size MCAO important
- SCAO images often distorted
- Moons sufficiently bright to use as WFS
- But requires non-sidereal tracking

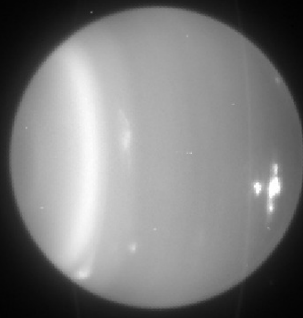


NSF's National Optical-Infrared Astronomy Research Laboratory

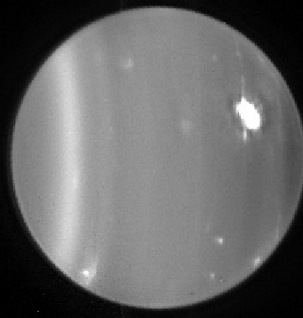
Icy Planets



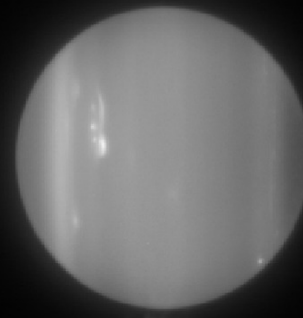
A NICMOS,F165M
1997-07-28



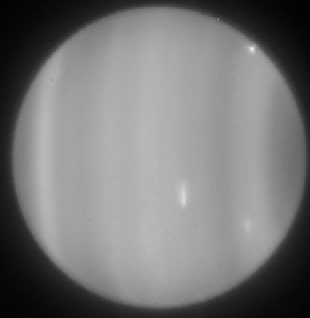
B Keck II,H
2003-10-04



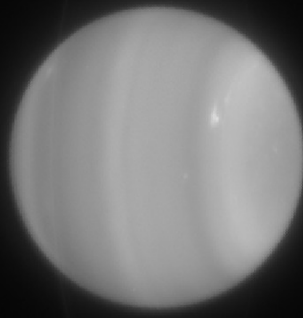
C Keck II,H
2005-08-15



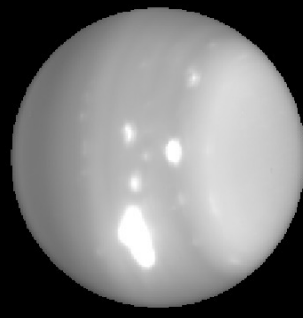
D Keck II,H
2007-08-08



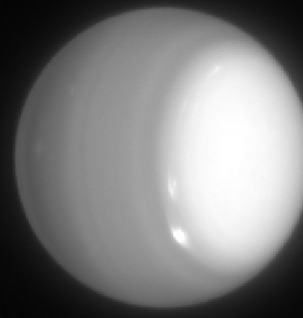
E Keck II,H
2009-07-14



F Keck II,H
2012-07-25



G Keck II,H
2014-08-06



H Keck II,H
2017-08-25

Uranus over time in the near-IR
Sromovsky & Fry



NSF's National Optical-Infrared
Astronomy Research Laboratory

Lowest-mass products of star formation



- What is the shape of the low-mass IMF?
- Necessary to target large samples of objects, NIR, Spec. and astrometry.
- Characterize their atmosphere, comparison with giant planets
- Proper motion crucial to associate membership



NSF's National Optical-Infrared
Astronomy Research Laboratory

Summary



- GNAO will enable a range of science , From solar system, planets, TNOs etc, over Galactic astronomy, Star Formation, Globular clusters, to extragalactic astronomy.
- High Strehl and a large field of view crucial for science cases
- Flexibility of MCAO over SCAO important
- In particular, nimble use and flexible scheduling allow new high resolution possibility in transient astronomy.



NSF's National Optical-Infrared
Astronomy Research Laboratory

Summary of requirements



Science case	Spectral range [μm]	Field of view	Strehl ratio	Astrometric accuracy [mas]	Photometric accuracy
Extragalactic and cosmology					
High-z galaxies	0.9-2.5	3" (multi-IFU)		<100	~10%
Nuclear star clusters & disks	0.9-2.5	20"			
Central parsecs around AGN	0.9-2.5	<~ 10"	60% (K)		~10%
Gravitationally lensed transients	0.7-2.5	2'	>30% (K)	10	2%
Galactic and nearby extragalactic					
Galactic young massive star clusters	1-2.4	>2'	50% (K)	<0.3	few %
Globular clusters	1.5-2.4	Multi-IFU patrol field 2'	>50% (K)	<10	<20%
Galactic Center	1-2.4	>2'		<0.2	few %
Brown dwarfs, solar system					
The lowest-mass products of star formation (astrometric orbits & resolved spectra)	1-2.5	~1" ~10'	FWHM/stable PSF more important	n/a ~1	n/a
Giant planet atmospheres and their disks	1-2.4	1'	30% (JHK)	<1	few %

